

Shivering Sands Generators

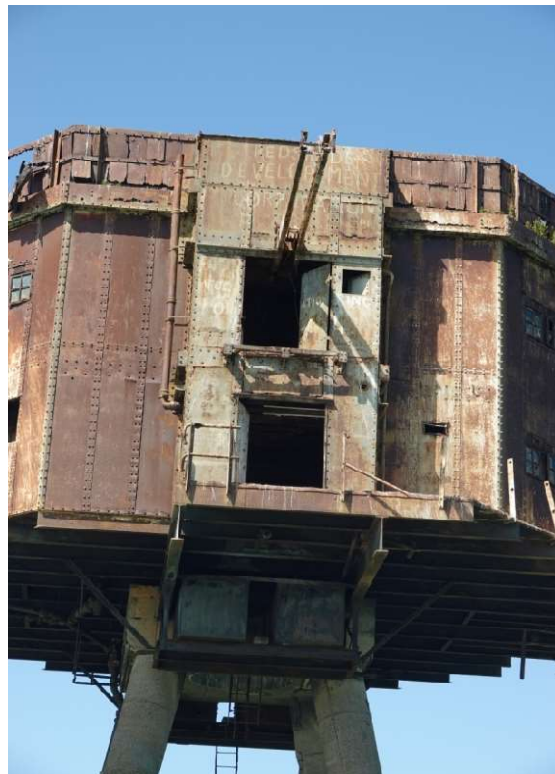
With much conjecture on Social Media in late 2024 I thought it worth sharing following:

All the Forts were equipped with three Gardner 4LW 1800 30kVa Generators

Naval Towers; at deck level 1 (A) north leg

Army Forts; Level 1 Searchlight Towers

Naval and all the Army Forts with the exception of the Control Tower had a Crane Hoist which had a massive rheostat above the operatives head to control speed N.B crane hoists could only lift 1 Ton



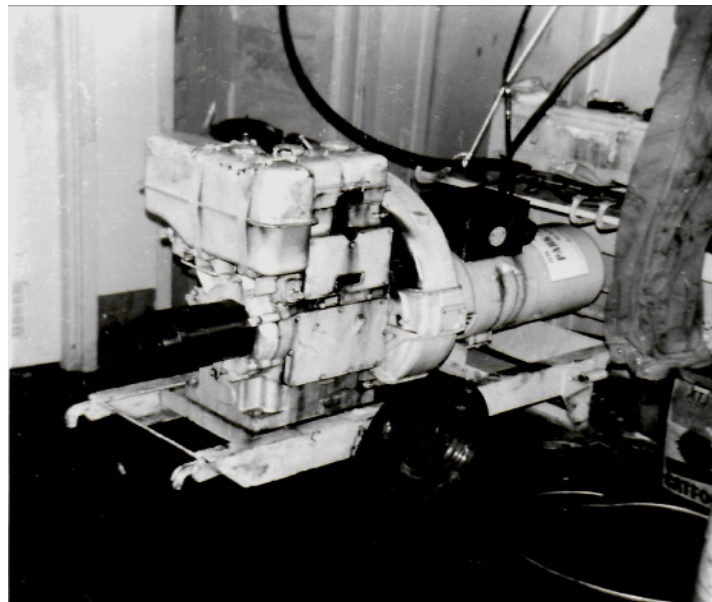
Army Forts

The Crane Hoist Operative Hatch above right of top doors

Shivering Sands, Radio City: Could not access the WWII generators on the Searchlight Tower as Gun Tower Two had been brought down by the 'Ribersborg' Bulk Carrier collision in 1963

Red Sands, Radio 390: Lawrence Bean brought a 4LW and the low voltage Gardner Generator back into use, the remaining LW used for spares

Radio Sutch ran a tiny petrol generator of unknown origin which charged the batteries in the ammunition room which in turn powered the equipment and the small ex Halifax Aircraft transmitter



Lister Generators

During the transition to Radio City a pair of Lister SR2 11.5kVa trolley mount Generators were brought into use

These were placed in the Men's washroom on the lower deck level on the then only occupied Southern Gun Tower 1



Lister Generator Exhaust

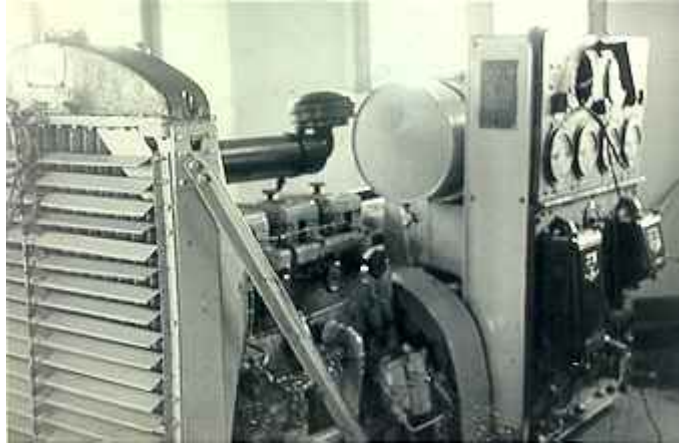
Dick (Dixon) made an improved exhaust from rubber pipe which caught fire!

Often during tendering demands on power from the crane hoist slowed records playing down and the transmitter was liable to blip. Consequently tapes were used when tenders arrived and a bigger generator planned

During the spring of 1965 Paul (Elvey) cut away walls and worked to make space and a bed for a new generator

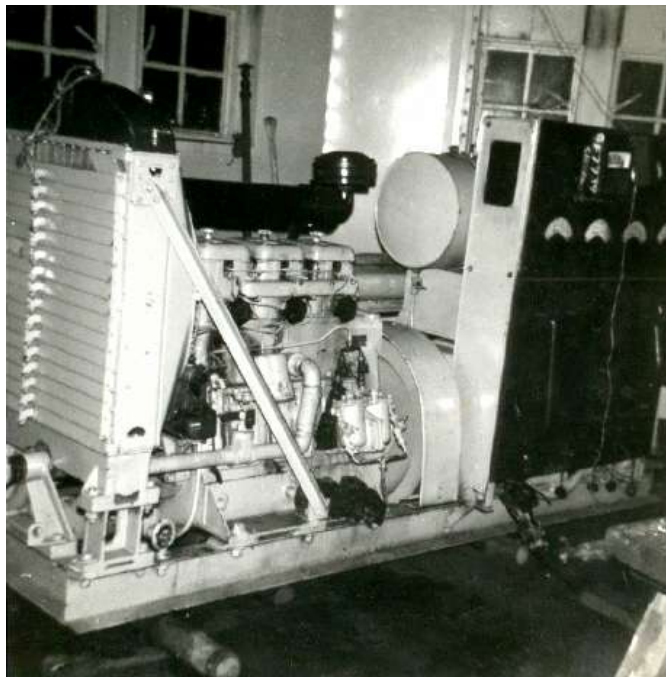
In the ensuing weeks before delivery, Tony (Pine) tied ropes around the legs of adjacent Towers, tensioned and pulled to test the electric crane until the ropes snapped; Horrified, I had visions of a Tower being dragged over so I kept out of the way!

A boat duly came down from Gravesend with the new generator aboard, I was crane operator that day and despite many attempts the crane couldn't lift the generator



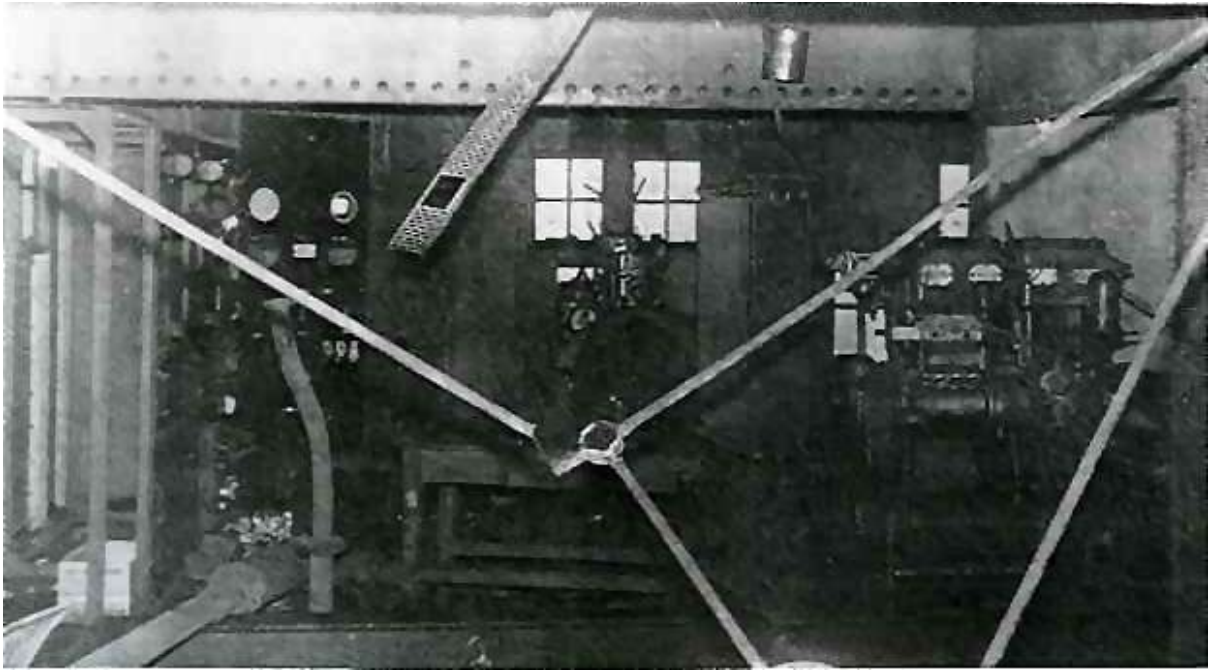
Lister JP3

Produced from 1929 until 1971 Lister JP3 Generator



Lister JP3

Specification: 230v, 15kVa (JP = Joint Product) (3 = 3 Cylinder) Weight 2.4 ton
In 1966 a Detroit Flat Head Generator was bought with the Lister as standby



Detroit Flat Head Diesel Generator

The Detroit Flat Head Diesel pictured in 1969